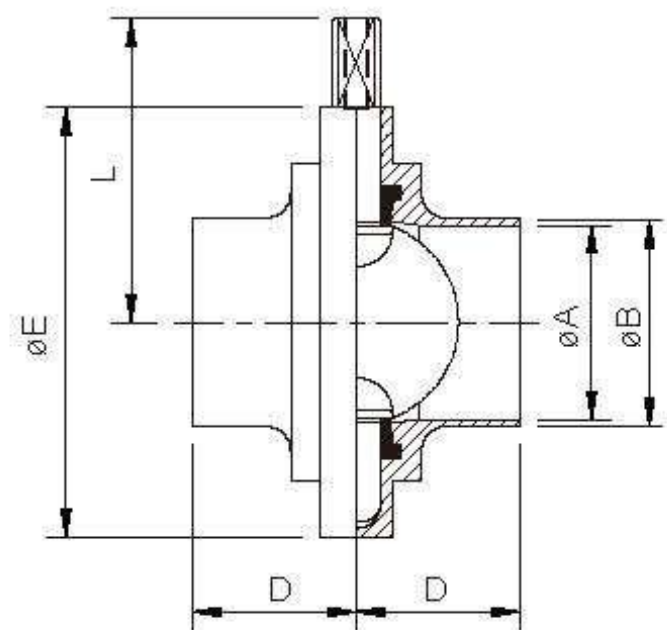


CSE Full Forged Butterfly Valves

Weld End



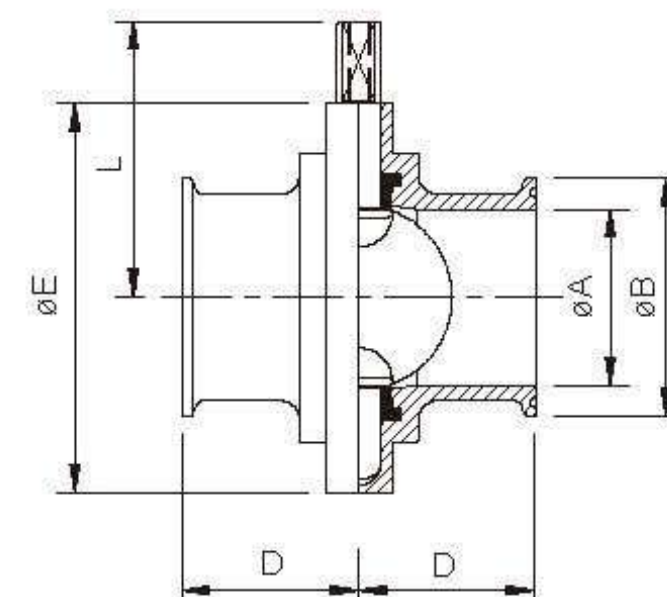
DIN WELD BUTTERFLY VALVE

SIZE	ØA	ØB	D	ØE	L
DN28	25	28	34	79	61
DN34	31	34	38	85	64.3
DN40	37	40	38	90	74.3
DN50	49	52	40	105	77.6
DN65	66	70	41	125	84.8
DN85	81	85	42	137	91.6
DN104	100	104	44	157	101.7

3A/BS/SMS WELD BUTTERFLY VALVE

SIZE	ØA	ØB	SIZE	ØA	ØB	D	ØE	L
1/2"	9.4	12.7	—	—	—	34	79	61
3/4"	15.75	19.05	—	—	—	34	79	61
1.0"	22.1	25.4	DN25	22.5	25	34	79	61
1.5"	34.8	38.1	DN38	35.4	38	38	85	64.3
2.0"	47.5	50.8	DN51	48.0	51	40	105	74.3
2.5"	60.2	63.5	DN63	60.2	63.5	40	112	77.6
3.0"	72.2	76.2	DN76	72.1	76.1	41	125	84.8
4.0"	97.6	101.6	DN104	100	104	44	157	101.7
6.0"	146.8	152.4	—	—	—	70	216.5	138.9

Clamp End

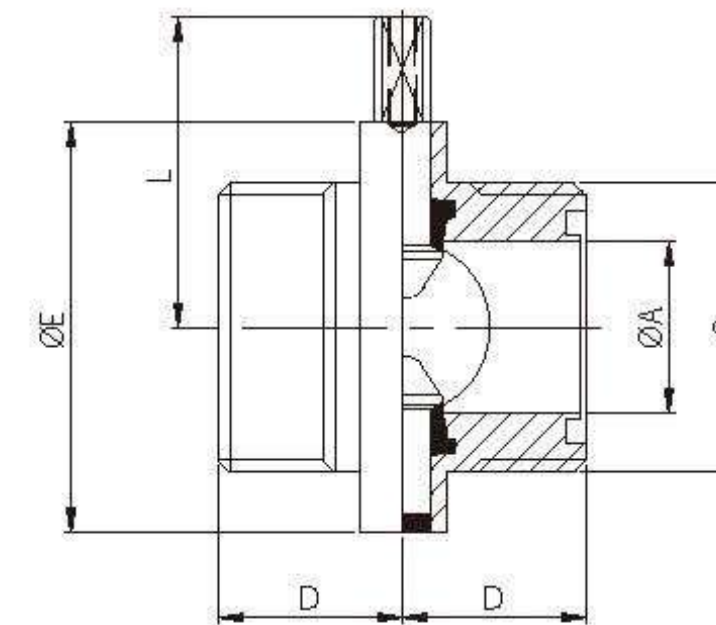


3A CLAMP BUTTERFLY VALVE

SIZE	ØA	ØB	D	ØE	L
1/2"	9.4	25.2	34	79	61
3/4"	15.75	25.2	34	79	61
1.0"	22.1	50.5	33	79	61
1.5"	34.8	50.5	33	85	64.3
2.0"	47.5	64.0	35	105	74.3
2.5"	60.2	77.5	35	112	77.6
3.0"	72.9	91.0	38	125	84.8
4.0"	97.4	119.0	38	157	101.7
6.0"	146.86	166.8	70	216.5	138.9

CSE Full Forged Butterfly Valves

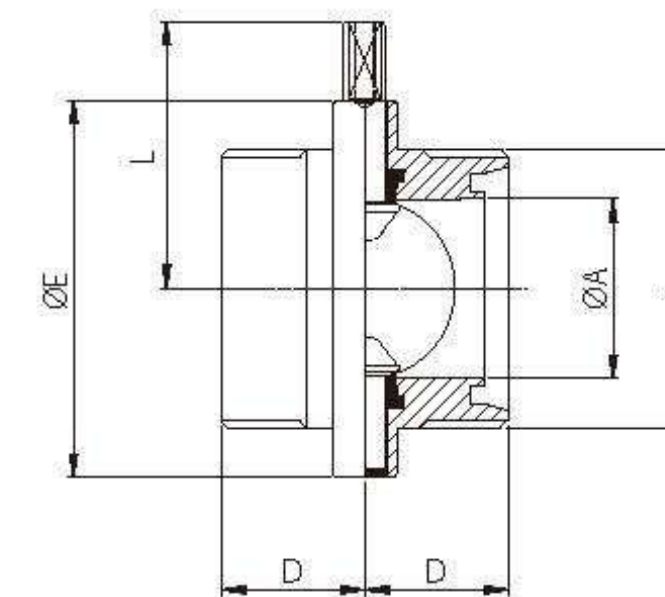
Male End



SMS MALE BUTTERFLY VALVE

SIZE	ØA	C	D	ØE	L
DN25	22.5	RD40x1/6	34	79	61
DN38	35.4	RD60x1/6	38	85	64.3
DN51	48	RD70x1/6	40	105	74.3
DN63	60.2	RD85x1/6	40	112	77.6
DN76	72.1	RD98x1/6	41	125	84.8
DN104	100	RD125x1/4	44	157	101.7

Male End

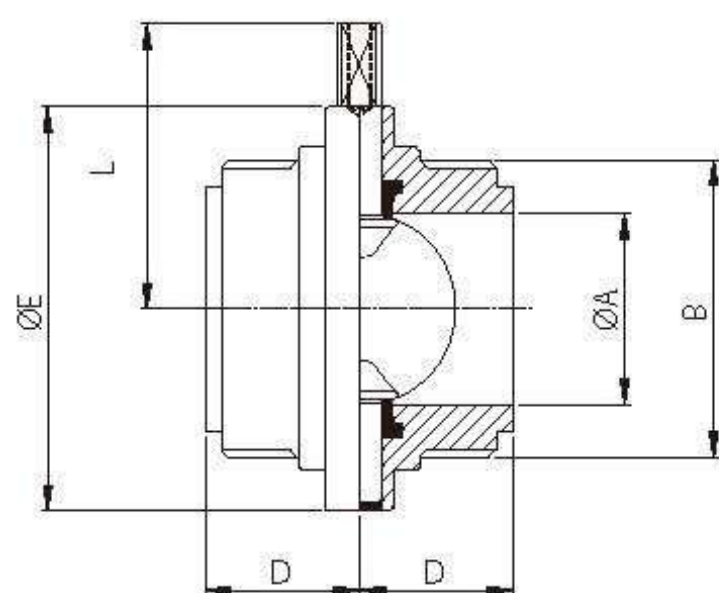


DIN MALE BUTTERFLY VALVE

SIZE	ØA	B	D	ØE	L
DN25	26	RD52*1/6	34	79	61
DN32	32	RD58*1/6	38	85	64.3
DN40	38	RD65*1/6	38	90	74.3
DN50	50	RD78*1/6	40	105	77.6
DN65	66	RD95*1/6	41	125	84.8
DN80	81	RD110*1/4	42	137	91.6
DN101.6	99	RD130*1/4	50	157	101.7
DN104	100	RD130*1/4	50	157	101.7

CSE Range of Butterfly Valve

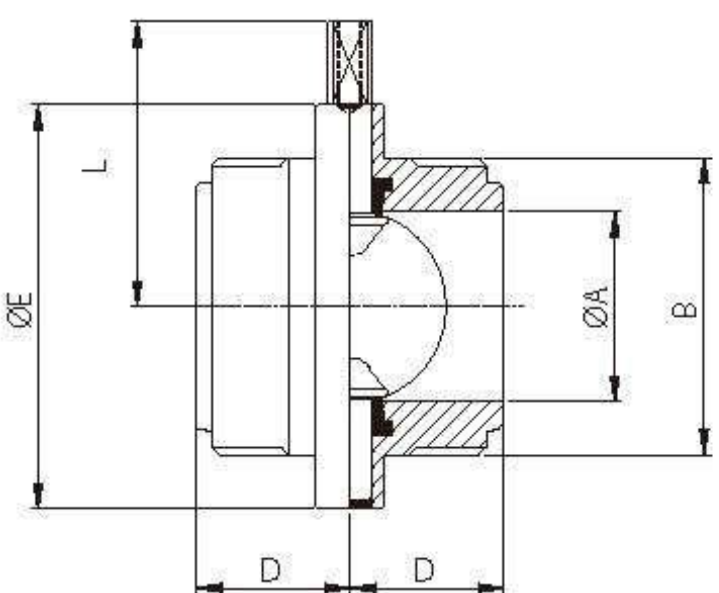
Male End



IDF Male/Male Butterfly Valves

SIZE	ØA	B	D	ØE	L
1.0"	22.4	37.13x8T ACME	34	79	61
1.5"	35.1	50.65x8T ACME	38	85	64.3
2.0"	47.8	64.16x8T ACME	40	105	74.3
2.5"	60.5	77.76x8T ACME	40	112	77.6
3.0"	72	91.19x8T ACME	41	125	84.8
4.0"	97.6	125.9x6T ACME	44	157	101.7

Male End

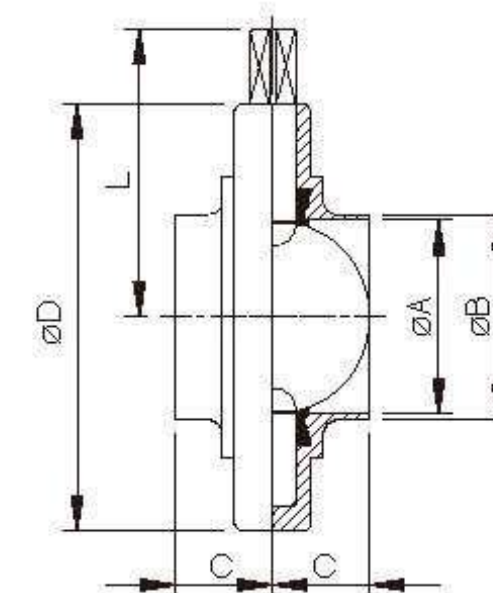


RJT Male/Male Butterfly Valves

SIZE	ØA	B	D	ØE	L
1.0"	22.1	45.72x8T WHIT	34	79	61
1.5"	34.9	58.42x8T WHIT	38	85	64.3
2.0"	47.6	72.72x6T WHIT	40	105	74.3
2.5"	60.3	85.42x6T WHIT	40	112	77.6
3.0"	73	98.12x6T WHIT	41	125	84.8
4.0"	97.6	123.52x6T WHIT	50	157	101.7

CSE Full Forged Butterfly Valve

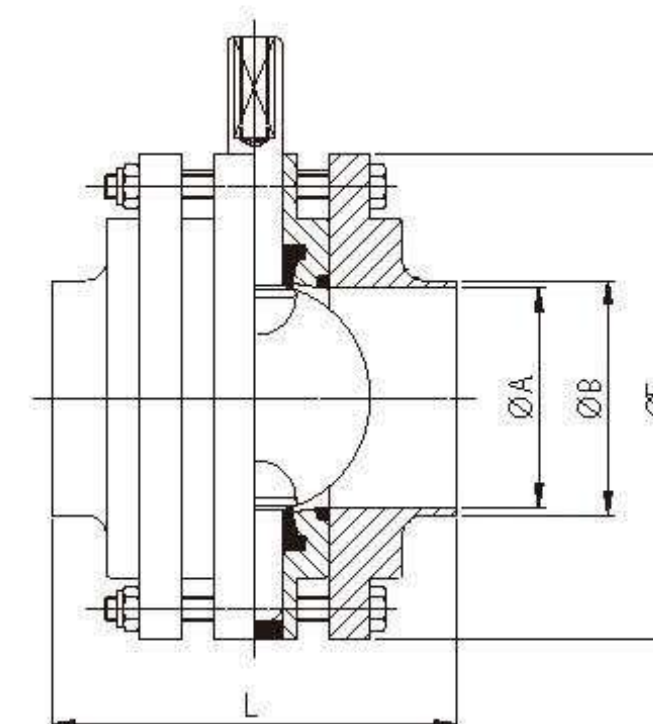
CSE G TYPE



DIN WELD/WELD BUTTERFLY VALVES

SIZE	ØA	ØB	C	ØD	L
DN25	26	29	20	87	61
DN32	32	35	21	92	64.25
DN40	38	41	25	97	66.7
DN50	50	53	25	110	74.3
DN65	66	70	25	127	84.75
DN85	81	85	30	142	91.6
DN100	100	104	32	162	101.75

3 Piece G Type Butterfly Valves

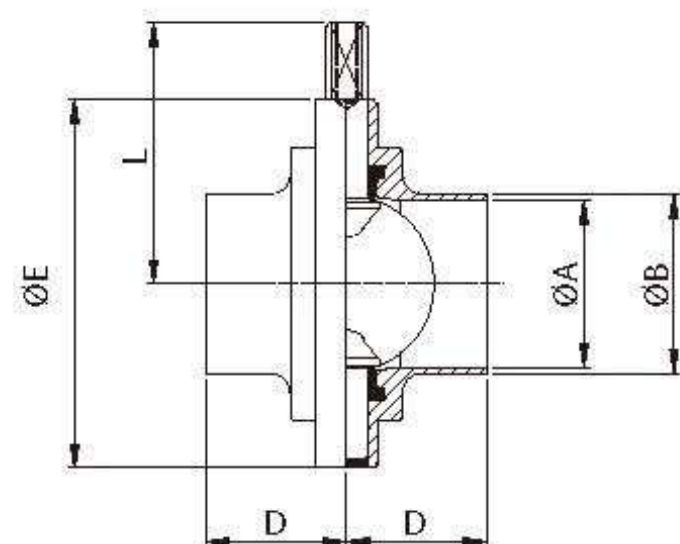


DIN WELD BUTTERFLY VALVE

SIZE	ØA	ØB	ØE	L
DN25	26	29	87	90
DN32	32	35	92	90
DN40	38	41	97	100
DN50	50	53	110	100
DN65	66	70	127	100
DN80	81	85	142	136
DN100	100	104	162	136

CSE Wine Macon Butterfly Valve

Macon Butterfly Valve

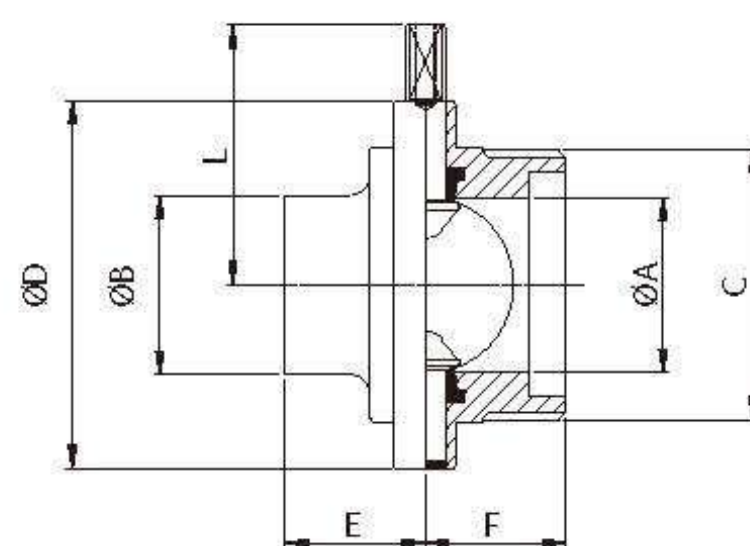


WINE WELD/WELD BUTTERFLY VALVE

SIZE	ØA	ØB	D	ØE	L
DN40/43	40	43	37	90	61
DN50/53	50	53	40	105	64.3
DN60/63	60	63	40	112	74.3
DN70/73	70	73	41	125	77.6
DN80/83	80	83	40	137	84.8
DN100/103	100	103	44	157	101.6



Macon Butterfly Valve



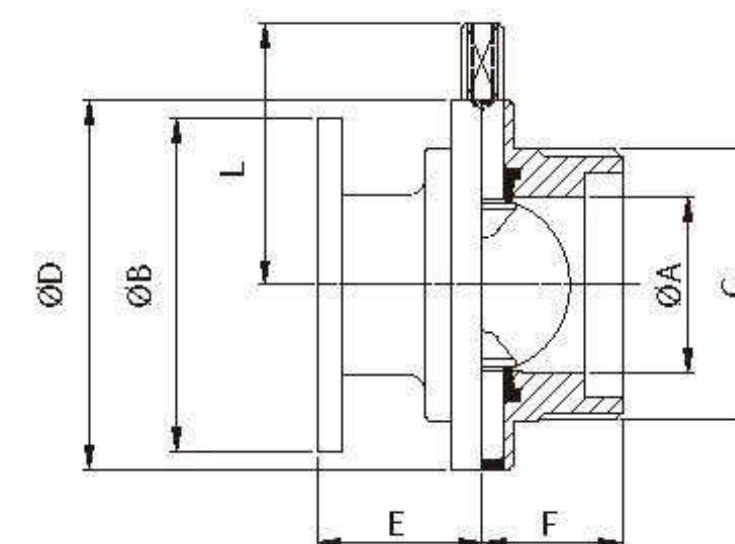
WINE WELD/MALE BUTTERFLY VALVE

SIZE	ØA	ØB	C	ØD	E	F	L
DN40/43	40	43	55x3	90	37	37	61
DN50/53	50	53	67x3	105	40	40	64.3
DN60/63	60	63	79x3.5	112	40	40	74.3
DN70/73	70	73	90x3.5	125	41	41	77.6
DN80/83	80	83	102x4	137	40	40	84.8
DN100/103	100	103	125x4	157	44	45	101.6



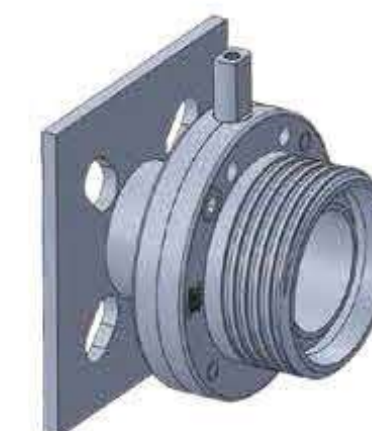
CSE Wine Macon Butterfly Valve

Macon Butterfly Valve

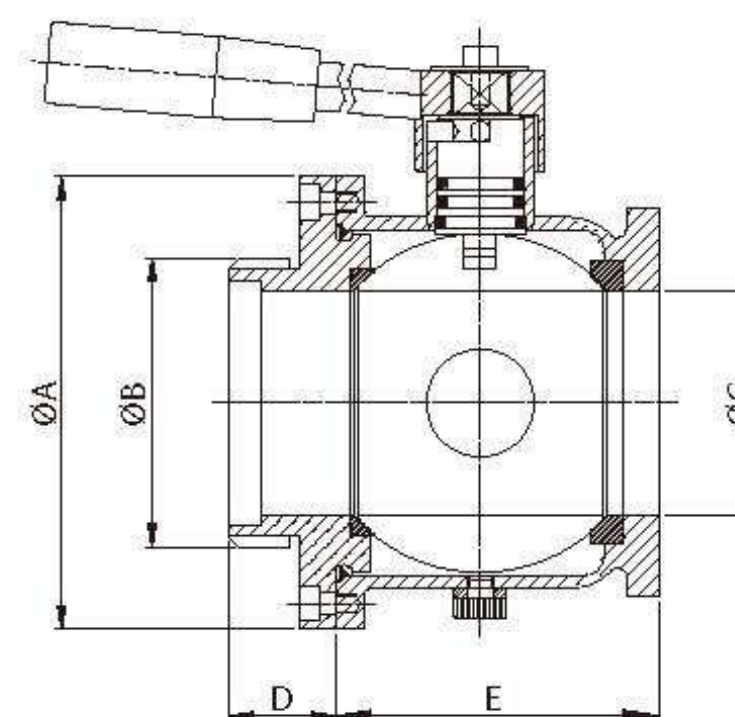


WINE MALE/FLANGE BUTTERFLY VALVE

SIZE	ØA	ØB	C	ØD	E	F	L
DN40/43	40	100	55x3	90	37	37	61
DN50/53	50	100	67x3	105	40	40	64.3
DN60/63	60	120	79x3.5	112	40	40	74.3
DN70/73	70	120	90x3.5	125	41	41	77.6
DN80/83	80	140	102x4	137	50	40	84.3
DN100/103	100	140	125x4	157	55	44	101.6



CSE Wine Ball Valve



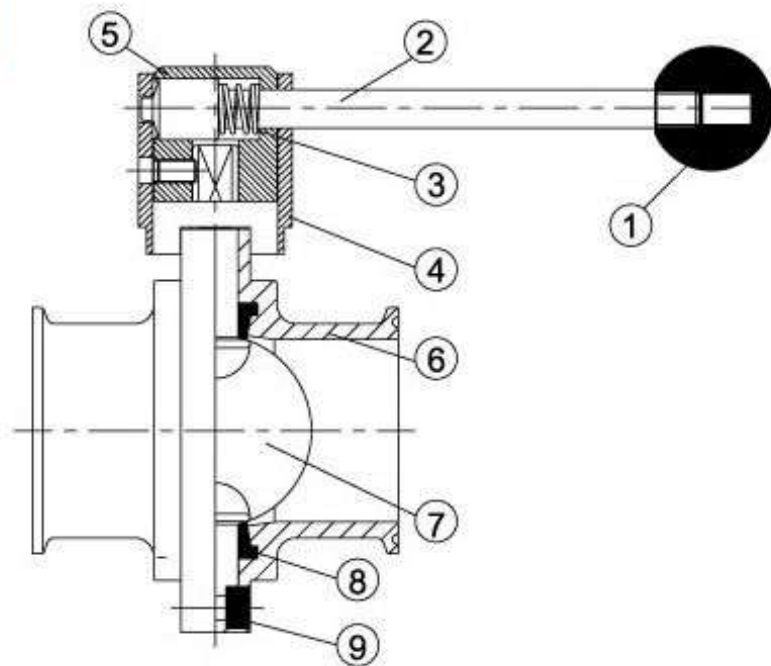
WINE MALE/FLANGE BALL VALVE

SIZE	ØA	ØB	ØC	D	E
DN43	94	54.5	40	32.6	72
DN53	105	66.5	50	33	79
DN73	140	89.5	69	33	100





NO.	NAME
1	KNOB
2	STEEL-BAR
3	SPRING ST.ST
4	ST.ST
5	HOLDER
6	BODY
7	DISC
8	EPDM RUBBER SEAT
9	SCREW BOLT



Torque for Full Open/Close

1.0"	<1 kgf-m
1.5"	<1 kgf-m
2.0"	1.3 kgf-m
2.5"	1.5 kgf-m
3.0"	2.0 kgf-m
4.0"	3.1 kgf-m

*1kgf-m = 9.8 N.m = 86.8 lbf-in = 7.23 lbf-ft

3A Clamp End With St.St Pull Handle, 4 Position

Width Range of CSE Butterfly Valve-C&G Type

Body: SS304.316.316L material out from precision CNC milling machined.

Body can be changeable and low torque. BS. SMS. DIN 3A Weld End and Male/Male End and Clamp End

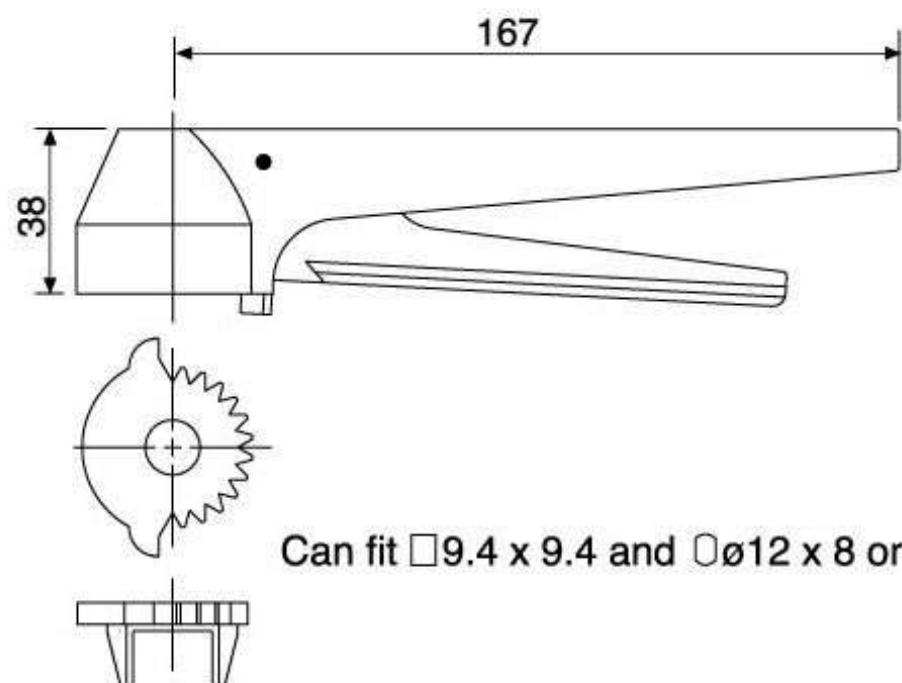
Disk: Out from full machined, high polished. Ra less than 0.6 μ m. 9.5mm and 8 x 12mm, 12 x 12mm head

for USA and Europe required. Electropolished and PTFE coating can be Required.

Handle: Different nylon re-force and stainless steel handle gripper, pull, Press type.

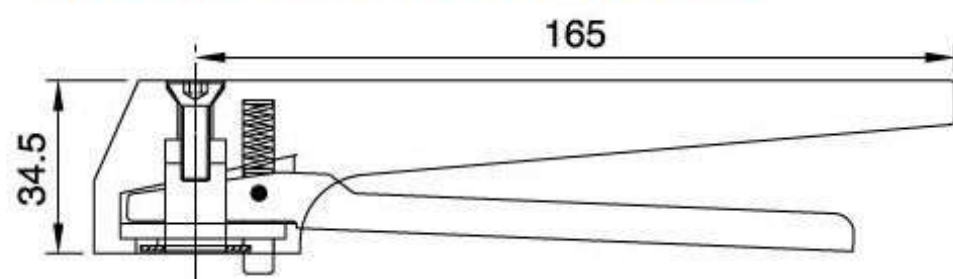
From 2 Position-12 Position, design for your wide range and beautiful choice.

GRIPPER HANDLE 12 POSITION-G12



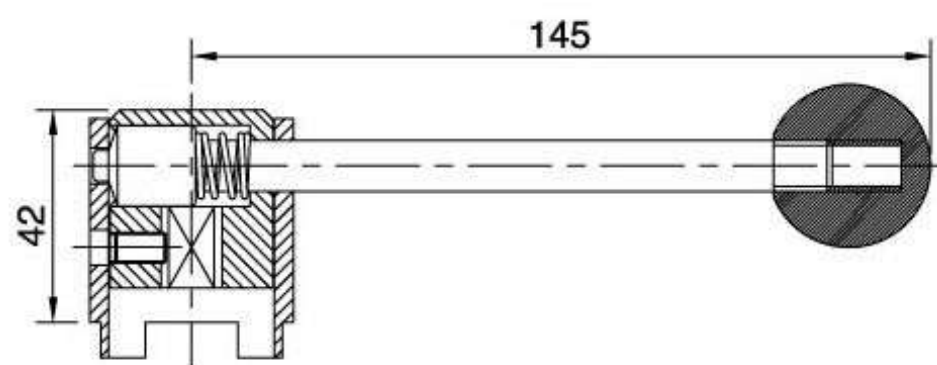
Can fit □9.4 x 9.4 and ○ ϕ 12 x 8 or □12x12

GRIPPER HANDLE 2 POSITION-G2



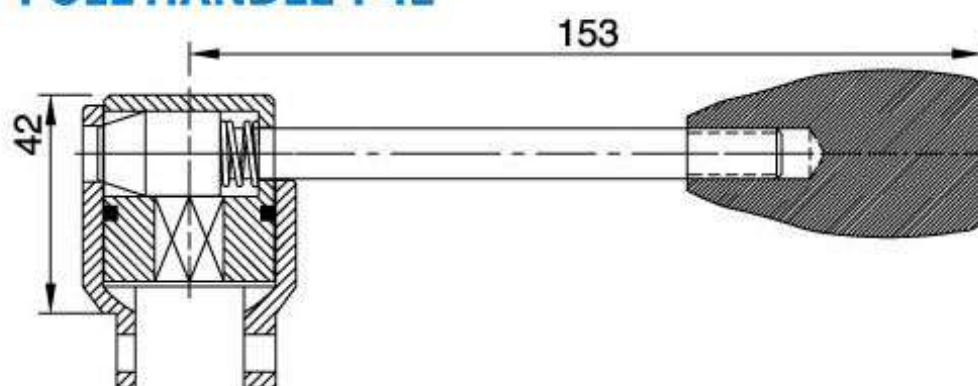
Can fit □9.4 x 9.4 and ○ ϕ 12 x 8 or □12x12

PULL HANDLE 4 POSITION-P4



Fit □9.4 x 9.4 and ○ ϕ 12 x 8 or □12 x 12

PULL HANDLE-P4L



Fit □9.4 x 9.4 and ○ ϕ 12 x 8 or □12 x 12